

FP Series

Sealed Ultra Miniature Pushbutton Switches



Description

FP series is a small size switch to take up lesser space on its PCB real estate but not compromised on its functionality and performance. The series can provide multiple circuitry in a single switch which means customers can offer extra functionality without changing the physical size of the switch. Sealed on both underneath of the switch and actuator to prevent ingress water from process cleaning.

Features & Benefits

- Ultra-miniature pushbutton
- Multiple poles and throws
- Long life 100,000 cycles
- Vertical and right angle mount
- Sealed against soldering and cleaning processes
- Optional caps
- RoHS compliant

Applications

- Networking equipment
- High-end consumer
- Professional instrumentation
- Computer, Server, Modem & Data storage

Specifications

Contact Rating	Max. 0.4 VA (28 V DC or V AC)
Electrical Life	50,000 cycles (FP11 & FP21) 10,000 cycles (FP12 & FP22)
Contact Resistance	(10mA @ 2 V DC) 80 mΩ max. initial
Insulation Resistance	500MΩ min. @ 500 V DC - 1 minute
Operating Temperature	-20°C to 80°C
Solderability	Per MIL-STD-202F method 208D, or EIA RS-186E method 9
Packaging	Tray pack - 25 pcs per tray (A1 type terminal) 100 pcs per tray (C1 type terminal) Caps (optional) Bulk bag: 100 caps per bag.

Notes:
Specifications and materials listed above are for switches with standard options. For information on specific and custom switches, consult Customer Service Center.

Materials

Movable Contacts	Base metal: Phosphor bronze Plating: Gold over nickel plate
Fixed Contacts	Base metal: Brass Plating: Gold over nickel plate
Cover	PA66 - Black
Actuator	PPS - Black
Base	Steel with tin plate (A1 Type terminal only)

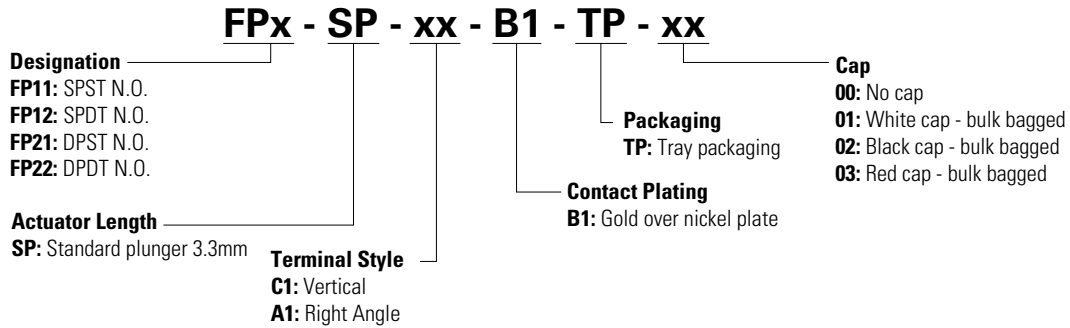
FP Series

Sealed Ultra Miniature Pushbutton Switches



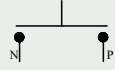
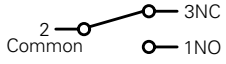
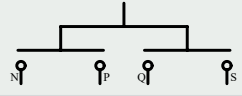
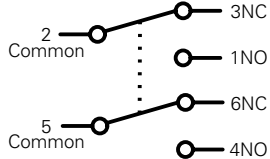


Ordering Number

To order, simply select desired option from each category and place in the appropriate box. Available options are shown and described on pages below. For additional options not shown in catalog, consult Customer Service Center.



Switch Circuit

Circuit	Model No.	Switch Function		Schematic
		POS. 1 	POS. 2 	
SPST	FP11	OFF	MOM	
		Open	1-3	
SPDT	FP12	ON	MOM	
		Open	2-1	
DPST	FP21	OFF	MOM	
		Open	1-3,4-6	
DPDT	FP22	ON	MOM	
		Open	2-1,5-4	

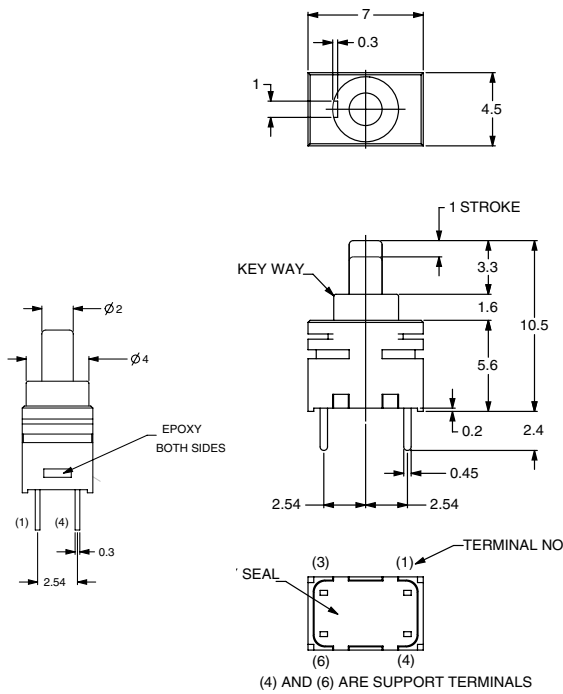
FP Series

Sealed Ultra Miniature Pushbutton Switches

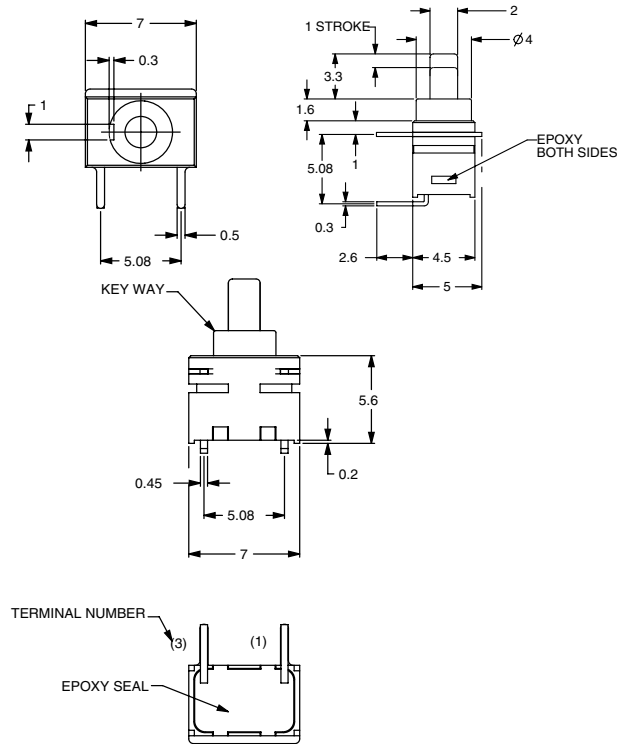


Terminal Style Dimensions in mm

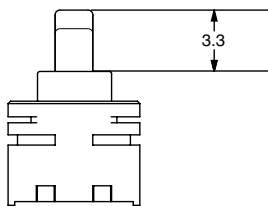
C1 Vertical



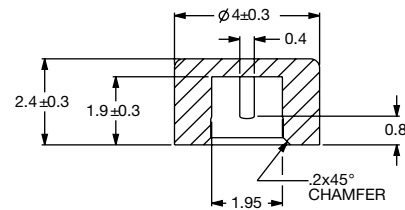
A1 Right Angle



Actuator Length SP Standard Plunger 3.3mm



Caps



Part #	Color
798D01000	White
798D02000	Black
798D03000	Red

Notes: To purchase Caps separately without switch, please use these part numbers.

Option Code	Function
00	No Cap
01	White Cap, Bulk Bagged
02	Black Cap, Bulk Bagged
03	Red Cap, Bulk Bagged

FP Series

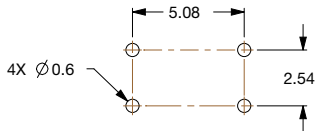
Sealed Ultra Miniature Pushbutton Switches



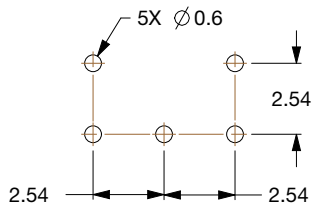
Mounting Hole Dimensions in mm

C1 Vertical

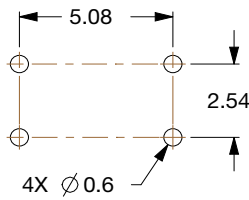
FP11



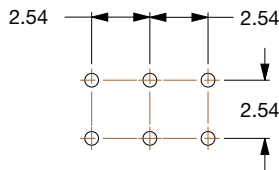
FP12



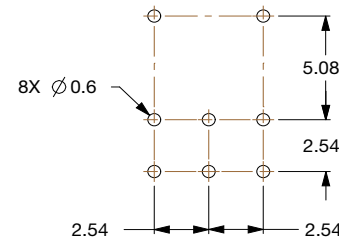
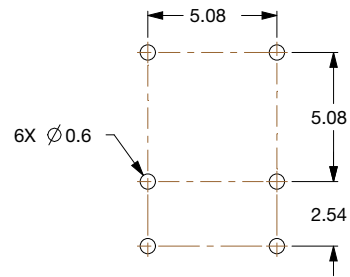
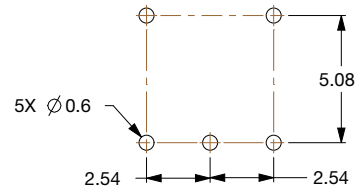
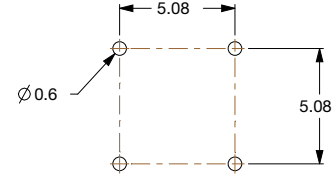
FP21



FP22



A1 Right Angle



Disclaimer Notice - Information furnished is believed to be accurate and reliable. However, users should independently evaluate the suitability of and test each product selected for their own applications. Littelfuse products are not designed for, and may not be used in, all applications. Read complete Disclaimer Notice at <http://www.littelfuse.com/disclaimer-electronics>.