

# V Series

## Power & Line Voltage Select Slide Switches



### Description

V series power and line voltage select slide switches are used by appliance designers looking for a long-lasting, high-performance switch. Featuring a snap-in panel and PC mounting and actuators with a screwdriver slot, the V series also have optional quick connect terminals and are rated up to 10 amps.

### Features & Benefits

- Ratings up to 10 AMPS
- Snap-in panel and PC mounting
- Actuators with screwdriver slot
- Quick connect terminals available
- RoHS compliant

### Applications

- Factory Automation

### Agency Approvals

Agency	Agency File Number
	E61760

### Specifications

<b>Contact Rating</b>	10 GPA @ 125 V AC 50/60 Hz T85; 5 GPA @ 250 V AC 50/60 Hz T85; 2 (0.5) A @ 250 VAC 50/60 Hz T85; 4RA @ 30 VDC T85
<b>Electrical Life</b>	10,000 make-and-break cycles at full load.
<b>Contact Resistance</b>	Below 10 m Ω typ. initial @ 2-4 V DC, 100 mA, for both silver and gold plated contacts.
<b>Insulation Resistance</b>	10 <sup>9</sup> Ω min.
<b>Dielectric Strength</b>	1,000 Vrms min. @ sea level.
<b>Operating Temperature</b>	-30°C to 85°C

### Materials

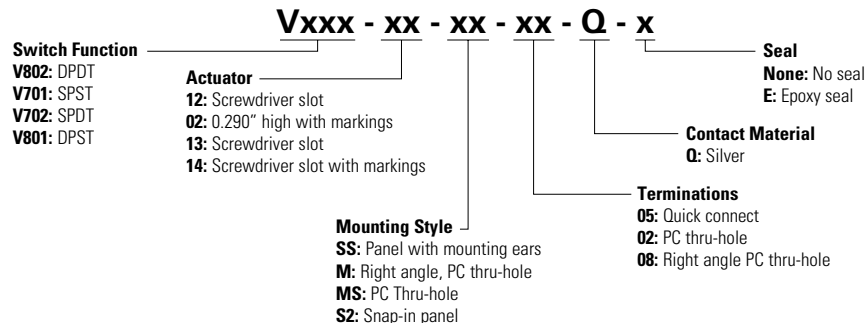
<b>Housing &amp; Top Plate</b>	6/6 nylon (UL94V-2), black.
<b>Actuator</b>	Glass filled polyester (UL94V-0), '01 and '02' styles, black (standard); '12, 13 and '14' styles, red (standard).
<b>Contacts</b>	Copper, silver plated.
<b>Terminals</b>	
<b>Contact Spring</b>	Music wire or stainless steel.
<b>Terminal Seal</b>	Epoxy.

**Notes:**

Any models supplied with Q, B or G contact material are RoHS compliant. Specifications and materials listed above are for switches with standard options. For information on specific and custom switches, consult Customer Service Center.

### Ordering Number

To order, simply select desired option from each category and place in the appropriate box. For additional options not shown in catalog, consult Customer Service Center.



# V Series

## Power & Line Voltage Select Slide Switches



### Switch Function

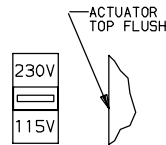
No. Poles	Model No.	Switch Function	Schematic	Available Mounting Styles
SP	V701	SPST		All
	V702	SPDT		

No. Poles	Model No.	Switch Function	Schematic	Available Mounting Styles
DP	S801	DPST		All
	S802	DPDT		

**Note:** All models C<sup>1</sup> <sup>15</sup> with all options.  
Contacts make on side actuator thrown.

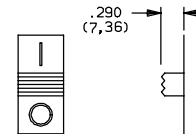
### Actuator

#### 12 Screwdriver Slot With Marking



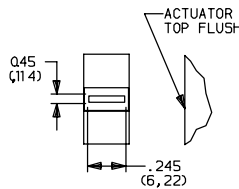
Actuator color is red with white 115V-230V markings (std.).

#### 02 0.290" High With Markings



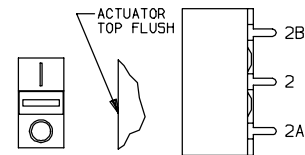
Markings are reversed on V702 and V802 models. Actuator color is black with white markings (std.).

#### 13 Screwdriver Slot With Marking



Actuator color is red.

#### 14 Screwdriver Slot Without Marking

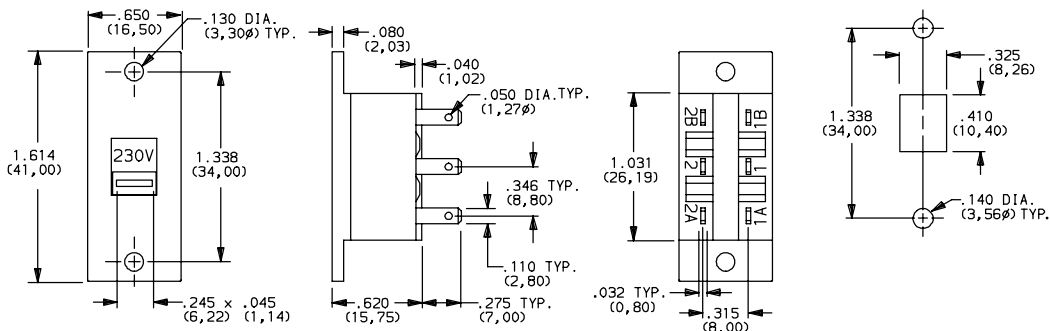


**Note:** Orientation of actuator markings and terminals.  
Markings are reversed on V702 and V802 models. Actuator color is red with white markings (std.).

### Mounting Style

#### SS Panel with Mounting Ears

#### V80212SS05Q DPDT



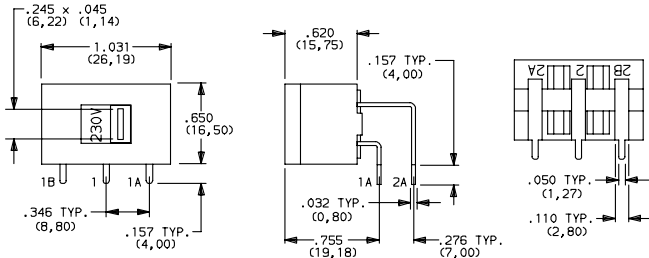
**Notes:** All models with termination 02 and 05.

# V Series

## Power & Line Voltage Select Slide Switches

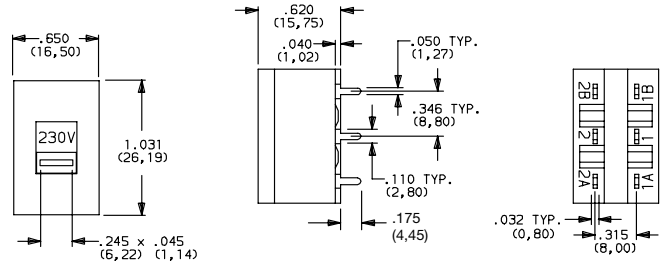


### MA Right Angle, PC Thru-hole V80212MA08Q Horizontal Actuation DPDT



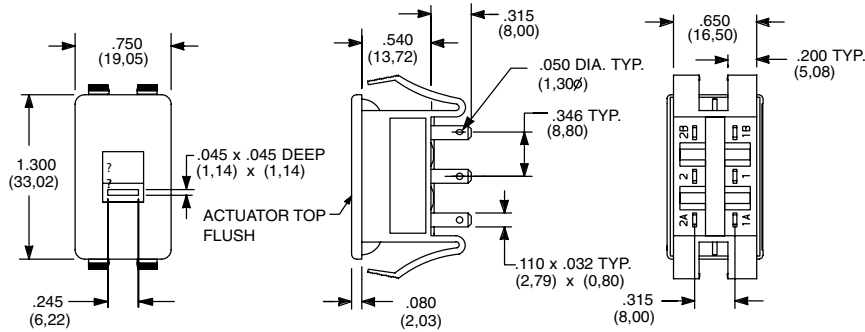
**Available with:** All models with 08 termination  
**PC Mounting:** PC mount, side actuated.

### MS Right Angle, PC Thru-hole V80212MS02Q DPDT

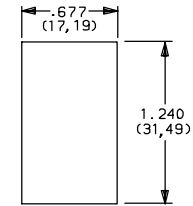


**Available with:** All models with 02 terminations  
**PC Mounting:** PC mount, top actuated. For mounting information.

### S2 Snap-in Panel Mount V80212S205Q DPDT



### Panel Mounting



Panel thickness:  
 .020 - .200 THK.  
 (0,50) (5,08)

**Available with:** All models with 05 terminations

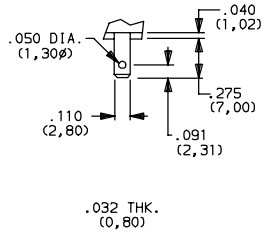
# V Series

## Power & Line Voltage Select Slide Switches



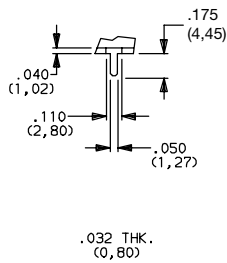
### Terminations

#### 05 Quick Connect

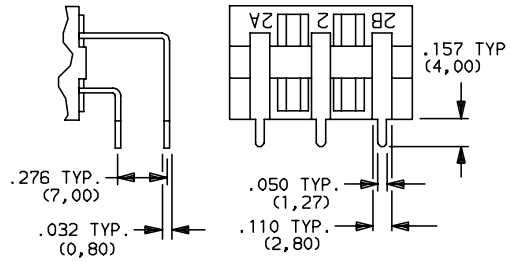


Fits .110 in. quick connector.

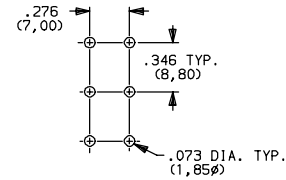
#### 02 PC Thru-hole



#### 08 PC Thru-hole

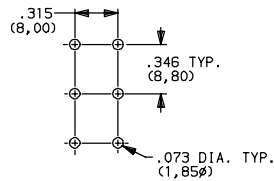


#### PC Mounting



MA, Mounting Styles.

#### PC Mounting



MS, SS Mounting Styles.

# V Series

## Power & Line Voltage Select Slide Switches



### Contact Material

Option Code	Contact Material	Ratings	
Q	Silver <sup>1</sup>	Power	10 GPA @ 125 V AC 50/60 Hz T85; 5 GPA @ 250 V AC 50/60 Hz T85; 2 (0.5) A @ 250 VAC 50/60 Hz T85; 4RA @ 30 VDC T85

**Notes:** See Technical Data section of this catalog for RoHS compliant and compatible definitions and specifications.

**1. Contacts & Terminals:** Copper, silver plated (standard with all termination options).

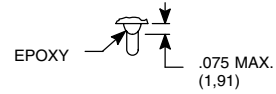
Any models supplied with Q contact material are RoHS compliant.

All models with all options.

### Seal

None No Seal

E Epoxy Seal



**Disclaimer Notice** - Information furnished is believed to be accurate and reliable. However, users should independently evaluate the suitability of and test each product selected for their own applications. Littelfuse products are not designed for, and may not be used in, all applications. Read complete Disclaimer Notice at <http://www.littelfuse.com/disclaimer-electronics>.