

ENC Series

Optical Encoder



Description

The ENC series optical encoder switches are perfect for designers in the automotive, industrial and instrumentation industries. Featuring clear detent and a strong haptic feel, these incremental type switches are available in two channels, with 2 bit output – and provide designers with the long-lasting, high performance switch needed to be successful.

Features & Benefits

- Clear detent/haptic feel
- Two channel, 2-bit code output
- Quadrature (Incremental type)
- Integrated pushbutton
- Panel mount with screw thread
- Cable and connector termination

Applications

- Automotive interior control
- Industrial equipment
- Test & Instrumentation
- Medical equipment

Rotary Specifications

Electrical & Mechanical Operating Voltage	DC 5 ± 0.25V, 30 mA max.
Output Voltage	Logic high > 3V DC Logic low < 1V DC
Rotational Torque	265 gf-cm initially
Mechanical Life	300K cycles

Pushbutton Specifications

Electrical & Mechanical Operating Voltage	DC 5V, 10 mA
Initial Contact Resistance	10 ohm max.
Actuation Force	600 ± 20% gf
Shaft Travel	0.74 ± 0.2mm
Contact Bounce	< 4 ms make, < 10ms break
Mechanical Life	300K cycles

Environmental Data

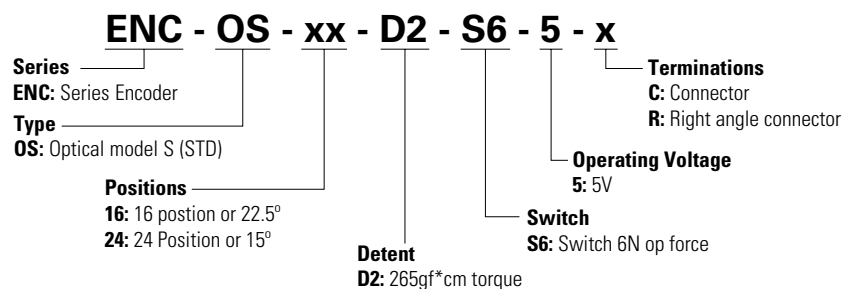
Operating Temperature	-40°C to 90°C
Operating Relative Humidity	<= 96 % RH, 40°C
Storage Temperature	-40°C to 90°C

Materials

Actuator	Zinc Alloy
Housing Frame	Zinc Alloy
Detent Rotor	POM, HB
Detent Spring	SUS
Housing Upper	PA66, V0
Housing Lower	POM, HB
Pushbutton Dome	SUS

Ordering Number

Product specifications and technical information listed above are for standard offer on Optical Encoder. For special options and custom request, please contact your sales representative.



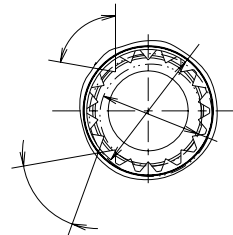
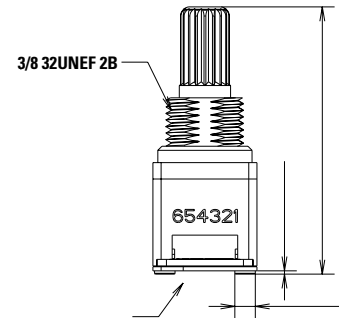
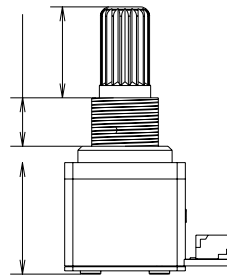
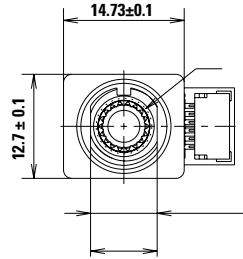
ENC Series

Optical Encoder

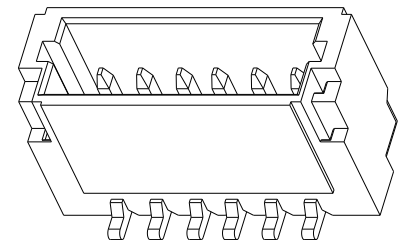
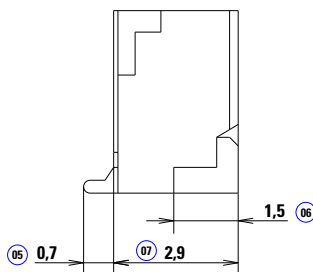
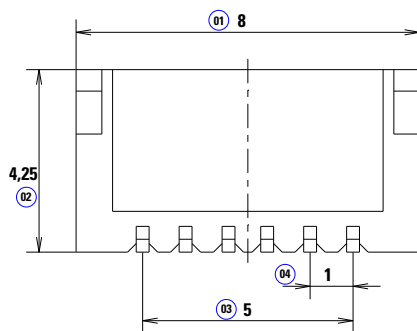


Dimensions ENCOS16D2S65C

Part Number	Packaging
ENCOS16D2S65C	Tray



Header Socket



Notes: Recommended connector is JST 06SR-3S

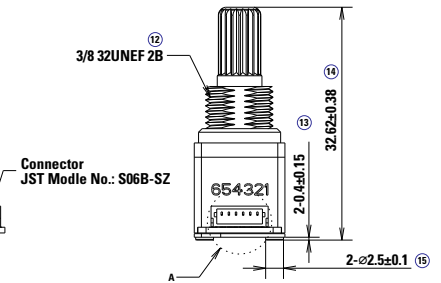
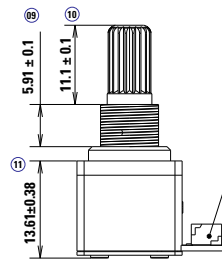
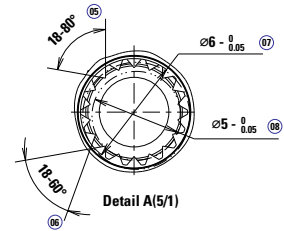
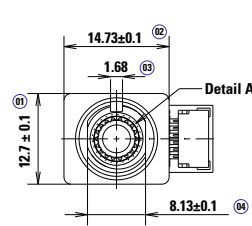
ENC Series

Optical Encoder

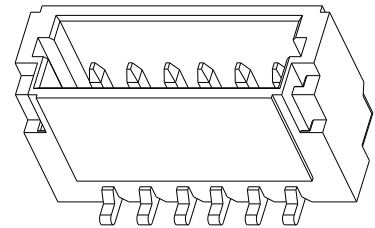
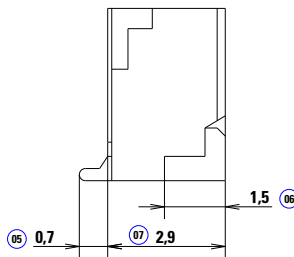
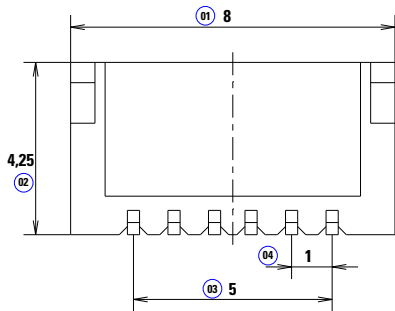


ENCOS24D2S65R

Part Number	Packaging
ENCOS24D2S65R	Tray



Header Socket



Notes: Recommended connector is JST 06SR-3S

ENC Series

Optical Encoder

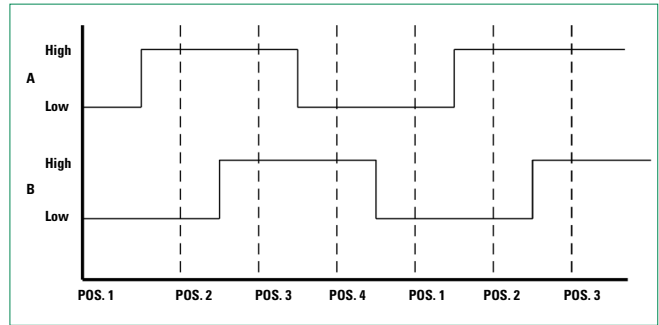


Operating Characteristics

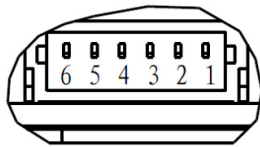
Output Logic Levels & Voltage by Position

Position	Output A		Output B	
	Logic Level	Voltage	Logic Level	Voltage
1	Low	<1.0	Low	<1.0
2	High	>3.0		
3	High	>3.0	High	>3.0
4	Low	<1.0		

Notes: Regardless of the number of detents, the outputs repeat every four positions.



Pinout Order & Function



Pin	Function
1	Ground
2	Pushbutton
3	Pushbutton
4	Output B
5	Output A
6	Power (5V DC)

Disclaimer Notice - Information furnished is believed to be accurate and reliable. However, users should independently evaluate the suitability of and test each product selected for their own applications. Littelfuse products are not designed for, and may not be used in, all applications. Read complete Disclaimer Notice at <http://www.littelfuse.com/disclaimer-electronics>.